

FIRST FLOOR FRAMING PLAN

Dw. 1 & 2
4950 & 4951

GINOS ENGINEERING PTY LTD
CONSULTING ENGINEERS
2/02/2021 42559

MEMBER SCHEDULE

FJ1	TSF4510 @ 600 CRS TSF4010 @ 450 CRS TO WET AREAS
B	1/TSF4510
B1	2/TSF4510 (BOXED CHORDS) - SK10
B2	250PFC (10mm CLEAT PL., 2M20 8.8/S) // or // 2/TSF4510 (BOXED CHORDS) - SK9 (PLATES TBC WITH GINOS)
PF1	230 PFC (REFER TO PORTAL FRAME DETAIL) - 10kN
PF2	230 PFC (REFER TO PORTAL FRAME DETAIL) - 10kN
EB	1/TSF4510
CB	150x50x3.0 RHS (REFER TO CANTILEVER BEAM DETAIL)
C1	125x75x6.0 RHS (C350-12mm THK, 3000mm SQ. BASE PL., 4M16 HILTI HY200 CHEM ANCHORS) - POCKET TO SUIT
C2	89x89x3.5 SHS (C350-10mm BASE PL., 2M16 HILTI HY200 CHEM ANCHORS)
WB	89x4.0 SHS
L	LINTEL BY TSF
x	BOXED STUD
xx	DOUBLE BOXED STUD

Notes:

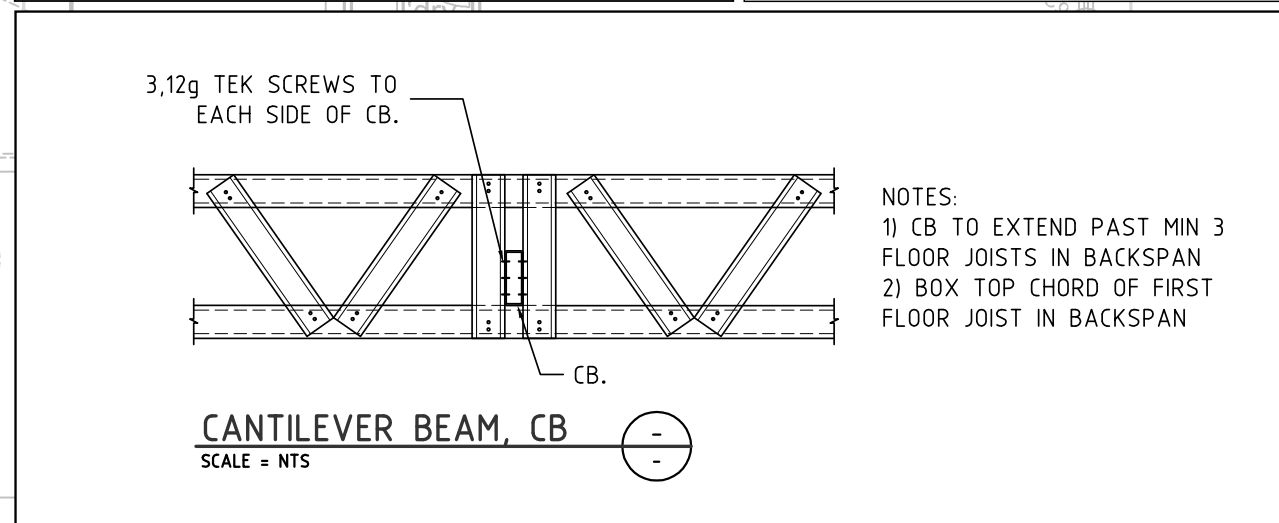
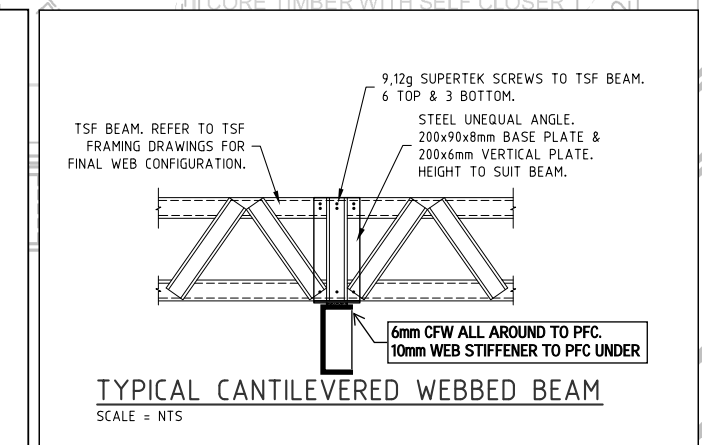
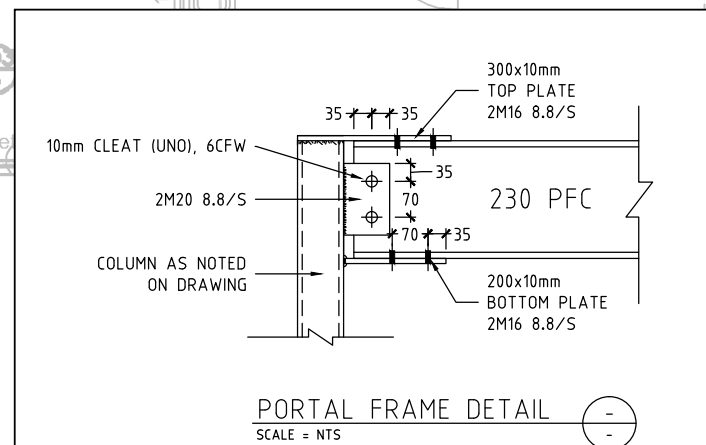
- Design Wind Speed = N2 (33m/s)
- Masonry supports not shown on this drawing to be provided by others.
- Dwellings are community titled. Bracing to be shared between dwellings in horizontal direction. Bracing to be provided by TRUE STEEL FRAMES. Refer to this office for any bracing shortfalls.
- All external walls to be load bearing

Construction Note:

Not one building can be demolished without the others or without seeking the advice of structural engineer prior to demolition

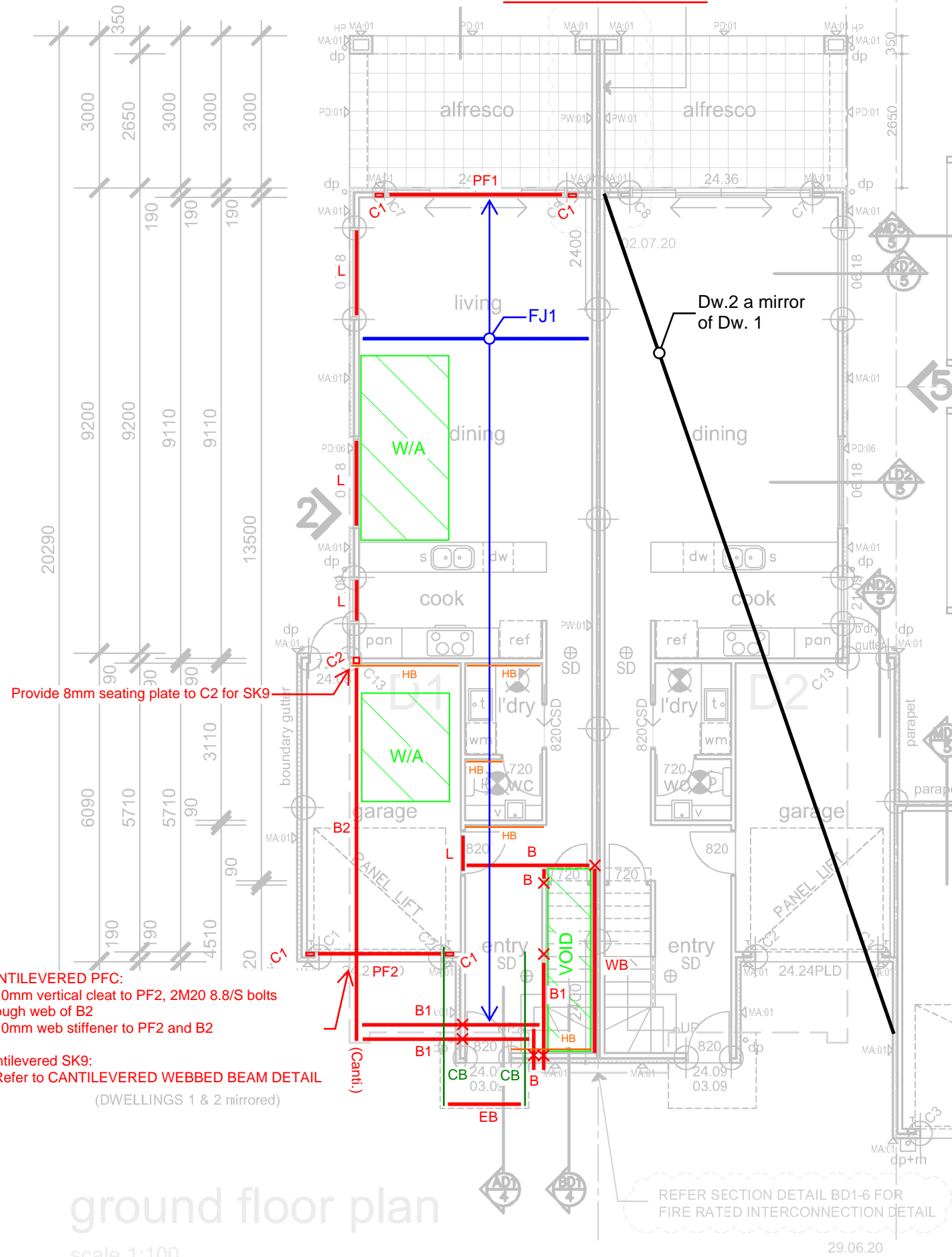
Bracing Schedule:

HB: HardieBrace 6kN/m Ult, to full length of wall where specified



NOTES:

- CB TO EXTEND PAST MIN 3 FLOOR JOISTS IN BACKSPAN
- BOX TOP CHORD OF FIRST FLOOR JOIST IN BACKSPAN



CANTILEVERED PFC:
1. 10mm vertical cleat to PF2, 2M20 8.8/S bolts through web of B2
2. 10mm web stiffener to PF2 and B2

Cantilevered SK9:
1. Refer to CANTILEVERED WEBBED BEAM DETAIL (Canti)

ground floor plan
scale 1:100

REFER SECTION DETAIL BD1-6 FOR FIRE RATED INTERCONNECTION DETAIL